

Hamilton County 4-H

October 2011

Changes to the Extension Office

As you are all well aware of our office has been through budget cuts. Those effects are finally known as of this month we lost our full time office manager to a less than part time position as well as other large cuts to our budget.—including large cuts to travel.

What this means for you is that no one may be in the office when you stop by. If the agents are out of the office for other work related duties we will have a form on the door where you can write questions or notes for us. We will also have a folder on our door with upcoming forms for deadlines, and have added a secure drop box to the outside of our building for you to leave information for us in the event we are not in the office. Remember our office hours are 8a.m. to noon and 1p.m. to 5p.m.

Do not think that because we may not be in the office we are not concerned with you. Please remember we have an answering machine and email so please do contact us and we will get back with you in a timely manner.

Susan will routinely work two days each week – Monday and Thursdays – other times you might want to call first before making a special trip.

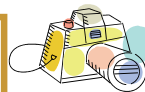


Tuesday, October 11, 2011

Hamilton County Extension Office - 5:15 pm

Training for all 4-H members planning on entering a Texas Major Stock Show during 2012. This training is to prepare exhibitor's for the required verification exam for all 4-H & FFA exhibitors starting with the 2012 show season. Before entering for a Major Stock Show you will be required to take and pass this exam.

This can be accomplished through this web site!
<http://qualitycounts.tamu.edu/verification/>



Photography Contest entries are completed and have been sent on to the District Contest, but senior 4-Hers getting ready for the state contest next spring may want to be thinking about what to snap a shot of next. The "theme" category will be TRAINS!!!

Choo-Choo!!!



Major Show Sign Up Night

Thursday November 3 , 2011

Time: 3pm to 7pm

Location: Hamilton County Extension Office

This is the last night to sign up for Winter/Spring 2012 Major Livestock Shows. Entry night is the absolute last day to turn in entries. NO EXCEPTIONS! If you can not attend entry night, then you must have them to Chelsea before this date.

If your making a special trip into Hamilton please call to see if we are in the office, to set up an appointment with Chelsea please call 254-386-3919 or cdfarris@ag.tamu.edu

Remember to bring your exhibitor's SSN, original registration papers for all registered animals and payment (due along with entry).



Remember the Texas 4-H participation fee increases on October 31, 2011. So join now!!!! Cost now is \$20 per participant and after October 31 cost increases to \$25 per participant.

To join you may stop by the Extension Office to pick up an Enrollment form or you can join online at the Texas 4-H Website <http://texas4-h.tamu.edu/>, click on the Join 4-H Tab!

Holiday Classic Livestock Clinic & Prospect Show

20th Annual North Holiday Classic Beef, Lamb, Goat & Swine
Clinic & Prospect Show
November 12-13, 2011

Bell County Expo Center in Belton, Texas.



Open to all interested youth in 4-H and FFA. There will be a **free** Saturday evening meal. Youth must attend Saturday clinics to participate in Sunday showmanship and prospect shows. Contact Chelsea for more information.

4-H Foods Workshops

Do you like to watch the food challenges and cook-offs on television? Wouldn't it be fun to actually compete in one! If so or you might just want to check it all out, come to the foods workshops. We will be working in teams to "invent" and prepare fun foods—as well as eat them! The first workshop in Hico was the 27th, the first in Hamilton will be October 7, right after school at the Hamilton High School FCCLA lab. There also is a Food Challenge contest that you can choose to enter if this is something you like!



4-H T-shirts For Sale

\$10

← Check Out the Design! Pretty Cool!
Come by the Extension Office to Pick One Up!!
Club Managers can stop in to pick some up for sale at club meetings.

Look for the new CDM guide to be posted to the Texas 4-H Website soon. If you are interested in this contest please contact Shirley at the Extension

Show 'Em How to Show 'Em Beef Camp

Date: Saturday, November 5

Location: Roger's Show Barn

More information to come...Check upcoming 4-H emails or with Cindy Rogers.



Photo courtesy

Junior Leadership Retreat

Who: 4-Hers ages 9-14 (& Adult Chaperones)

What: State level leadership development program

Where: Texas 4-H Conference Center, Brownwood

When: Friday, November 11 arrive 7:30—8:30pm through Sunday, November 13 depart by 11 a.m.

Cost: \$35, the County 4-H Club pays 2/3 the original \$105 cost.

To Register: texas4hcenter.tamu.edu open now thru November 4.



Junior Leadership Retreat is the epitome of "youth teaching youth". Members of the Texas 4-H Council serve as the coordinators of the weekend leadership retreat and facilitate all of the concurrent workshops. Junior and Intermediate level 4-H members have an opportunity on a state-wide basis to begin networking with other 4-H members while learning about new and exciting 4-H projects and opportunities.

This year's focus will be on Healthy Lifestyles, Outdoor Challenge, Record Keeping, Housing and Agricultural Products.

We've Finally Updated our new Website....We've added 4-H information, events, etc. Check out the changes and more will come shortly!!!!

JOIN IN AND VOTE FOR YOUR FAVORITE 4-H MEMBER DOODLE

The 4-H Program is having doodle contest for 4-H members to try out their artistic skills. Log on to the 2011 Doodle Site and vote for your favorite 4-H Doodle! The winner will be highlighted on the 4-H website during the 2011 National 4-H Week. To cast your vote go to: texas4h.tamu.edu/news/national4Hweek/news_nat_4hweek_doodle.php

County Food Challenge and Show



As the fourth year approaches for the 4-H Food Challenge, we have had tremendous participation statewide.

The District 8 Food Challenge and Food Show will be later this year, Thursday, December 8, (you will be excused from school to attend—another good reason to compete!) with the County show scheduled for mid-November. Now it the time to come to foods workshops, form your teams and practice nutrition skills to be ready for the contest. Let Shirley know who is on your team ASAP.

Remember, your teams should be from 3-5 people, and there are two age divisions: Junior/Intermediate and Senior. Senior 4-H members may also enter the traditional food show as well. If you have questions, please call the Extension office.

Pecan Sale Fundraiser

We didn't get to do the pecan sales at Dove Festival, so it is critical that we do a good job at Holiday Market on October 15 and individual sales. Brochures were handed out at council and will be available from your Club Managers at the upcoming October meetings.

Individual orders should be tallied and the club order turned in to the Extension office by Oct. 17 for Thanksgiving and Nov. 14 for Christmas.

But now very importantly, we need workers for Holiday Market on Saturday, October 15. The event is 9-3, at Fair Park but we will need kids there a little longer. The Extension Education Club ladies have given us our booth free if we will help them set up and take down stuff. They were SO appreciative of the great help the 4-Hers were last year!! Please get workers for the following shifts and send their names to Shirley ASAP:

- 8:00–10:30 (must be set up by 8:30)
- 10:30–1:00 pm.
- 1:00–3:30



There is a \$30 first place and \$20 second place award to the 4-Hers who sell the most pecan products. If you work at least one shift, we will divide the #'s sold (which should be significant) and you can add to your total sales. Also if anyone is able to stay the whole day, Shirley would like to put you in charge of the event (leadership opportunity!)



Photo courtesy

one day 4-H One Day 4-H is the state-wide volunteerism day for all 4-Hers across Texas!!! This is a great opportunity to help those in our community by giving back time, money and service while showing our 4-H Pride. This year One Day 4-H will be celebrated across the state on October 8.

This year our Hamilton County's "One Day" project is to collect gifts for the elderly at Lee Healthcare's Angel trees.

We are just going to collect gifts - lotion, socks, lap throws, nail polish, sweatshirts and pants, smell good stuff, after shave, brushes/combs, house shoes, stationary, large piece puzzles, etc. and take them to Lee Healthcare in Hamilton or the pharmacy in Hico. Free 4-H t-shirt to the 4-Her who collects the most items to donate to the Lee Healthcare's Angel trees.

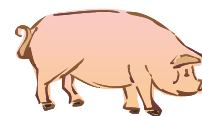
Collect as much as you can in October, so we can report it for One Day, and then we will just keep on collecting until Christmas.

You can still do individual club projects too!



Swine Project Meeting

For those interested in attending the Swine Project meetings, we will be sending out an email with those dates along with more information.



DATES TO REMEMBER



2011

October

10/2-8 National 4-H Week



- 10/4 Quality Counts Training (Hico 4-H Meeting)
- 10/7 1st Hamilton Foods Workshop—HS FCCLA Lab
- 10/8 One Day 4-H
- 10/11 Quality Counts Training (Extension Office) 5:15 p.m.
- 10/15 Holiday Market—Pecan Sales Booth (Fair Park)
- 10/7-15 Heart of Texas Fair (Waco)
- 10/7-15 D8 Photography on display at H.O.T. Fair
- 10/17 1st Pecan Sales Deadline due to Ext. Office
- 10/25 Lamb & Goat Validation at Fair Park 4-7pm

November

- 11/3 Major Show Sign-Up Deadline 7pm (Extension Office)
- 11/5 Show 'Em How to Show 'Em Beef Camp
- 11/11 Extension Office Closed -Holiday
- 11/12-13 Holiday Classic (Belton)
- 11/14 Final Pecan Sales Deadline due to Ext. Office
- 11/24-25 Extension Office Closed—Holiday
- County Food Challenge—Mid November
- Swine Validation –Time & Date TBA

December

- 12/1 County Fair Entries Due 5pm (Extension Office)
- 12/8 District 8 Food Challenge/Food Show (Belton)
- 12/23-26 Extension Office Closed—Holiday

2012

January

- 1/1 County Fair Set-Up Day
- 1/4-7 Hamilton County Fair
- 1/13 - 2/4 Fort Worth Livestock Show

February

- 2/20 Extension Office Closed—Holiday
- 1/13 - 2/4 Fort Worth Livestock Show
- 2/9-26 San Antonio Livestock Show
- 2/11-26 San Angelo Livestock Show

March

- 2/28-3/18/ Houston Livestock Show
- 3/3 Dist. 8 Consumer Decision Making Contest
- 3/9-24 Star of Texas (Austin)

April

- 4/6 Extension Office Closed—Holiday
- 4/13 District 8 Fashion Show (TSU)

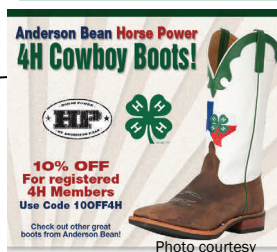
May

- 5/5 District 8 Roundup (Hillsboro)

Dates/Locations Subject to Change*

Anderson Bean Boots is offering all Registered 4-H members a 10% OFF Discount!!!

Check out the featured Texas 4-H Boots!!!!



If you would like to view a copy of the 2012 HCYF Rule Book, it maybe located online at the following website: hamilton-tx.tamu.edu Look under the Publications Tab.

4-H Clubs for 2011-2012

Hico Club— Manager, Becky Crum—796-4095

Super Stars Club— Manager, Charlette Boyd-386-4982

Shooting Sports Club—Manager, Andrea Watson-796-2356

**I Spy Club—Manager, Faith Massingill & Bill Taylor
386-8494 386-3398**



For more information on any of the items in this newsletter, please contact the Hamilton County AgriLife Extension Office at 254-386-3919 or hamilton-tx@tamu.edu.

Be sure to checkout the District 8 4-H Website to see a list of all activities going on in District 8.
<http://d84-h.tamu.edu/>

Hamilton County Extension Office

724 S. College St.
Hamilton, TX 76531

(254) 729-3919 Office
(254) 386-3514 Fax
hamilton-tx@tamu.edu

Shirley Gerald

County Extension Agent
Family & Consumer Sciences
s-gerald@tamu.edu

Chelsea Farris

County Extension Agent
Agriculture/Natural Resources
cdfarris@ag.tamu.edu

Susan Hemphill

Office Manager
shemphill@ag.tamu.edu